



Melbourne Sustainable
Society Institute

2017 | ANNUAL
REPORT





Credits

Melbourne Sustainable Society Institute
Annual Report 2017

Published by
Melbourne Sustainable Society Institute
Level 3, Melbourne School of Design (Building 133), Masson Road,
The University of Melbourne
Parkville, Victoria, 3010 Australia
t: +61 3 9035 8235

This Annual Report is available online at www.sustainable.unimelb.edu.au/annual-reports

Editor: Claire Denby
Design: Claire Denby

Photography Credits:

Cover image: Courtesy of Learning Environments, University of Melbourne.
Page 17: Climate Reality Project photos courtesy of James Thomas.
Page 27: Profile photo of Linh Do courtesy of Stephen McKenzie.

The information in this publication was correct at the time of printing. The University of Melbourne reserves the right to make changes as appropriate.



Contents

About Us	1
From the Director and Chair	2
Governance	
Our Team	3
Executive Committee	4
Advisory Board	5
Associates	6
Research Clusters	7
Research Initiatives	9
Postgraduate Students and Early Career Researchers	13
Research Facilitation	14
Bids and Grants	15
Partnerships and Collaboration	16
Engagement	17
Visiting Scholars	19
Events	21
Publications	25
Media and Communications	29
Financial Statement	31



About Us

Since MSSI's inception in 2009, the Institute has played a role in reshaping the way research is done across the University of Melbourne, and established itself as a key entity both nationally and internationally in climate and sustainable cities research. Underpinning MSSI's work is a strong focus on forging meaningful partnerships and innovative approaches to collaboration, engagement and impact. The Institute strives to be an exemplary conduit for sustainability research by working around barriers, perceived and real, that can limit collaboration across sectors, and by ensuring that people, vision and values remain at the core of what we do.

MSSI's remit, along with its sibling Melbourne Research Institutes, has been to contribute to the University's overall research capacity by re-imagining the disciplinary expertise within the faculties and departments in impactful ways, creating fruitful research linkages and collaborations and articulating University research to external audiences. This brief also includes bringing new sources of external funding and collaborative opportunity into the Faculty structure.

Throughout our lifespan MSSI has progressed these aims in a myriad of ways, across a diverse range of audiences and with a strong regional commitment to Victoria, Australia and the Asia Pacific. MSSI researchers work directly with communities across Australia and the Asia Pacific, and with business, not for profit, three tiers of Australian government, and international governments and agencies to identify, clarify, examine, address and evaluate issues that impact a sustainable future.

The Institute's strength lay in our people, who bring a vast array of skills and experience from their varied discipline and professional backgrounds, and who are united in their commitment to progressing a sustainable future through engagement, collaboration, and the tangible translation of research within the communities it impacts.

To remain nimble and responsive to current and emerging issues around sustainability, MSSI's staffing and project structures have been intentionally flexible throughout the Institute's nine years of operation. This strategic approach allows the Institute to facilitate and support key longer term projects, whilst retaining capacity to test new opportunities and linkages along the way, ensuring MSSI is well positioned in the ever shifting local and international research and higher education landscape.

MSSI's current research and policy work focuses on the following research capabilities, drawing membership and expertise from within MSSI and across the University of Melbourne:

- > Climate
- > Sustainable Cities
- > Indigenous Land & Culture
- > Urban and Regional Resilience
- > Political Economy of Sustainability

Further details about MSSI's people, research and other activities can be found at:

www.sustainable.unimelb.edu.au



From the Director

2017 was a year of excitement and new achievement for MSSI, punctuated by the arrival of new staff and students and departure of some team members. In January, we welcomed Lars Coenen, from Lund University Sweden, to the newly created City of Melbourne Chair in Resilient Cities. June saw us farewell long serving Executive Officer Craig Prebble, who contributed mightily to MSSI's development over preceding years.

The Ecocity World Summit, held from the 12-14th July, was a major milestone amongst our usual busy schedule of seminars, roundtables and symposia. The Hon Al Gore opened the Summit, and his rousing address was an important moment in the Summit's varied and exciting program. Ecocity was a 'bigtop' event for MSSI and our key collaborators, and we extend a great debt of thanks to John Wiseman and Belinda Young for their extraordinary efforts in pulling this huge undertaking together. Our gratitude also to MSSI Board Chair Cr. Arron Wood, who played a key role in the planning and staging of the event and in chairing the Summit Advisory Committee.

There are numerous great achievements by MSSI and our collaborators to relay from another year of fruitful collaboration and activity, which I invite you to read about in the pages of this report. Finally, my warm thanks to all the MSSI staff and supporters who ensured that 2017 was a year of accomplishment and enjoyable collegial enterprise.

Professor Brendan Gleeson, Director MSSI

From the Chair

The year in review has seen a hectic schedule of activity, demonstrating once again MSSI's leadership in generating discussion and action around societal transformation.

The Ecocity World Summit in July was a highlight, bringing together close to 1000 delegates from 30 countries and generating discussion around some of the most compelling issues of our time. MSSI once again hosted Al Gore, with the reach of his visit extending beyond the conference to discussions with leaders from all major fields of climate policy and action, and the presentation of an Honorary Doctorate to Mr Gore by the University of Melbourne's Chancellor, Mr Allan Myers QC AC. Plaudits to Don Henry, Linh Do and Claire Denby for leading and coordinating a very busy program for Mr Gore and his team.

In 2017 MSSI continued to transgress the boundaries between academia, government, business and community to connect leading actors in the sustainability space, whilst also playing a key role in advancing the University's sustainability agenda. With another productive year under the Institute's belt, MSSI remains focused on building and sharing the University of Melbourne's sustainability knowledge with communities and societies, both locally and abroad.

Arron Wood, Deputy Lord Mayor, City of Melbourne and Chair of MSSI Advisory Board



Our Team

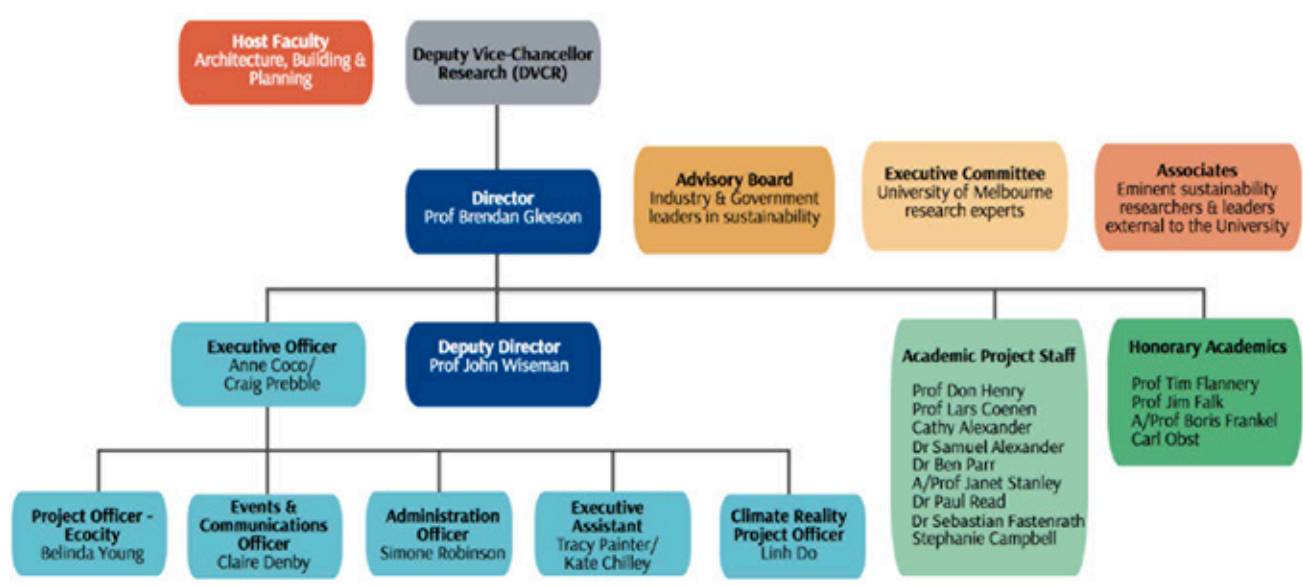
MSSI farewelled a number of staff in 2017, as well as welcoming new members to the team. MSSI's longstanding Executive Officer Craig Prebble departed in June 2017 to take up an appointment with the University of South Australia. Craig was a MSSI stalwart, having been with the Institute since close to inception in 2009, and made a significant and lasting contribution in terms of MSSI's establishment and development along the way. Executive Assistant Kate Chilly spent time with MSSI in 2017, supporting the activities of senior academic staff. Research Fellow Ben Parr departed MSSI at the end of the year, having made a significant contribution to MSSI's Briefing Paper outputs including papers on Brazil's potential for a low-pollution economy and the opportunities

for Canada to take a leadership role with emissions reduction to meet the Paris Agreement target.

MSSI was thrilled to welcome the following new staff in 2017:

- Stephanie Campbell, Climate Transformations Cluster Coordinator, March 2017
- Lars Coenen, City of Melbourne Chair of Resilient Cities, January 2017
- Sebastian Fastenrath, Research Fellow in Resilient Cities, November 2017
- Tracy Painter, Executive Assistant, October 2017
- Alexei Trundle, Future Cities Cluster Coordinator, January 2017

ORGANISATIONAL CHART





Nikos Papastergiadis is the Director of the Research Unit in Public Cultures and also a member of MSSl's Executive Committee and Future Cities Research Cluster. His publications include *The Turbulence of Migration* (2000), *Metaphor and Tension* (2004) *Spatial Aesthetics: Art Place and the Everyday* (2006), *Cosmopolitanism and Culture* (2012).

Our Executive Committee

The MSSl Executive Committee provides advice to the Director and acts as a conduit for communication across the University. The Committee in 2017 consisted of 18 academic staff members from 8 of the University's 10 faculties.



Chair: Professor Brendan Gleeson

MSSl, Interdisciplinary Research Institute,
Faculty of Architecture, Building and
Planning



Associate Professor Peter Christoff

School of Geography,
Faculty of Science



Professor Richard Eckard

PICCC, Faculty of Veterinary & Agricultural
Sciences



Professor Robyn Eckersley

School of Social and Political Sciences,
Faculty of Arts



Professor Don Henry

MSSl, Interdisciplinary Research Institute,
Faculty of Architecture, Building and
Planning



Dr Dominique Hes

Senior Lecturer in Sustainable Architecture,
Faculty of Architecture, Building & Planning



Professor David Karoly

School of Earth Sciences,
Faculty of Science



Associate Professor David Kennedy

Director, Office for Environmental Programs
Faculty of Science



Dr Jeana Kriewaldt

Melbourne Graduate School of Education



Dr Stephanie Lavau

School of Ecosystem and Forest Sciences,
Faculty of Science



Associate Professor Malte Meinshausen

Australia-German Climate and Energy
College, School of Earth Sciences, Faculty of
Science



Dr Ben Neville

Department of Management and Marketing,
Faculty of Business and Economics



Professor Nikos Papastergiadis

Research Unit in Public Cultures, School of
Culture & Communication, Faculty of Arts



Professor Chris Ryan

Victorian Eco-Innovation Lab, Faculty of
Architecture, Building & Planning



Professor Anne Steinemann

Melbourne School of Engineering, Faculty of
Engineering



Professor Stephan Winter

Department of Infrastructure Engineering,
Melbourne School of Engineering, Faculty of
Engineering



Associate Professor Margaret Young

Centre for Resources, Energy and
Environmental Law, Faculty of Law



Professor John Wiseman

MSSl, Faculty of Architecture, Building and
Planning



Katerina Gaita is the founding Director of Climate for Change and a valued member of our Advisory Board. She is a climate communicator, specialising in community engagement. In 2017 Katerina spoke on a panel event as part of MSSl's Climate Conversations series. This conversation was recorded as a podcast and featured in the August edition of Dumbo Feather magazine.

Our Advisory Board

MSSI enjoys the support of a diverse and vibrant Advisory Board of experts, leaders and champions of sustainability. The Advisory Board provides assistance with strategic planning for the Institute and gives advice on areas in which MSSl can create linkages with external stakeholders in order to grow the research program and attract funding. The Board also reviews key MSSl strategic documents.



Chair: Arron Wood

Deputy Lord Mayor of Melbourne



Rob Gell

Principal, World Wind for Change Pty Ltd



Dr Imran Ahmad

Director, Future Earth Australia



Emily Gerrard

Director, Comhar Group Pty. Ltd.



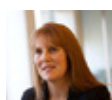
Rueben Berg

Director, Indigenous Architecture and Design Victoria; RJHB Consulting



Jeremy Hobbs

Hobbs Consulting, former Executive Director, Oxfam international



Rosemary Bissett

Head of Sustainability Governance and Risk, National Australia Bank



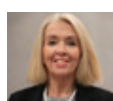
Victoria McKenzie-McHarg

Climate Campaign Manager, Australian Conservation Foundation



Gerard Brown

Group General Manager, Corporate Affairs, Australia and New Zealand Banking Group



Graz van Egmond

Chief Executive Officer, Banksia Foundation



Professor Peter Doherty

Laureate Professor, University of Melbourne



Annie Volkering

Director of Applied Science, Environment Protection Authority, Victoria



Adam Fennessy

Partner at EY, Advisory, Government and Public Sector



Mark Wakeham

CEO, Environment Victoria



Megan Flynn

Group Manager, Environment and Carbon Strategy Office, QANTAS Airways



Professor Rachel Webster

President Academic Board, University of Melbourne



Katerina Gaita

Director, Climate for Change



Bob Welsh

Executive Director, Sustainability Advisers



MSSI Associate Cathy Oke presents at the Ecocity World Summit

Our Associates

MSSI benefits from the interest and involvement of leading academics, government representatives, innovative business people, and heads of NGO's and community organisations. The Associates are innovative thought leaders and change agents, striving for a sustainable society for all. They help promote MSSI externally and transfer knowledge back into the Institute.

Guy Abrahams

CEO and Co-Founder, CLIMARTE: Arts for a Safe Climate

Fiona Armstrong

Convenor, Climate and Health Alliance

Professor Kate Auty

Vice Chancellor's Professorial Fellow, The University of Melbourne and Commissioner for Sustainability and Environment

Associate Professor Grant Blashki

Nossal Institute for Global Health, University of Melbourne

Dr Kathryn Bowen

Senior Research Fellow, National Centre for Epidemiology & Population Health Research, Australian National University

Emeritus Professor Graeme Davison AO

School of Philosophical, Historical & International Studies, Faculty of Arts, Monash University

Ian Dunlop

Governance and Sustainability Advisor, Chairman, Safe Climate Australia; Member, Club of Rome; Director, Australia 21

Fergus Green

Researcher and climate policy consultant, London School of Economics & Political Science

Tanya Ha

Environmentalism, broadcaster, writer and science and sustainability engagement specialist

Dr Steven Henderson

Associate of MSSI; Faculty of Architecture, Building and Planning

Carolyn Ingvarson

Convenor, Lighter Footprints Climate Change Action Community Group

Dr Cathy Oke

Knowledge Broker, Clean Air and Urban Landscapes Hub, University of Melbourne; Councillor, City of Melbourne

Kelly O'Shanassy

Chief Executive Officer, Australian Conservation Foundation

Dr Lauren Rickards

Senior Lecturer, critical human geography, RMIT University

Hon Tom Roper

Climate change and environmental policy advisor

Anna Rose

Environmentalism and climate change campaigner

Meredith Sussex

Strategic Adviser, Office of Living Victoria

Dr Helen Sykes AM

Founder, Future Leaders

Professor Patrick Troy AO

Adjunct Professor Urban Research Program, Griffith University; Visiting Professor City Futures Research Centre, UNSW



Launch of Farmers For Climate Action, Victorian chapter - a Climate Conversations event

Research Clusters

The MSSI Research Clusters provide a connecting fora for University of Melbourne academics, including students working in our main theme areas, climate and cities.

CLIMATE TRANSFORMATIONS

The Climate Transformations Research Cluster (CTRC) is a university network facilitating research collaborations, policy linkages, engagement activities and projects leading to increased understanding of climate change mitigation and adaptation challenges and responses.

Highlights in 2017 include:

> Coal Transitions: Research and Dialogue on the Future of Coal

A key research project and partnership coordinated by the CTRC in 2017 was the international research project, Coal Transitions: Research and Dialogue on the Future of Coal. This collaborative project brings together researchers from six major coal producing nations (China, India, Germany, South Africa, Poland and Australia) to explore trajectories and policy options with the potential to facilitate well managed and equitable economic transitions away from coal.

> The Launch of Farmers For Climate Action (Vic)

The CTRC, in partnership with the Faculty of Veterinary and Agricultural Science's Primary Industries Climate Challenges Centre, co-hosted the official launch of Farmers for Climate Action in Victoria (pictured above). The launch focused on the role of Australian farmers as being on the front line of a changing climate. An expert panel discussed the challenges and opportunities of climate change and what this really means for Victorian farmers.

> Engagement with the Arts

The CTRC in 2017 included a focus on the critical role of art and culture in the transition to a sustainable future. This included hosting Climarte CEO Guy

Abrahams who presented a talk entitled 'Climate & Culture', reviewing the rise of organised cultural responses to climate change over recent years, and looking in particular at the ART+CLIMATE=CHANGE festival in Melbourne. Guy discussed how the creative power of the arts can inform, engage and motivate action on climate change and other sustainability issues.

Climate Transformations - Leaders

Coordinator

Stephanie Campbell, Melbourne Sustainable Society Institute

Convenors

Prof John Wiseman, Deputy Director, Melbourne Sustainable Society Institute.

A/Prof Peter Christoff, School of Geography, Faculty of Science

Professor Don Henry, Melbourne Sustainable Society Institute

Prof Richard Eckard, PICCC, Agriculture and Food Systems, Faculty of Veterinary and Agricultural Sciences

Prof Robyn Eckersley, School of Social and Political Sciences, Faculty of Arts

Prof David Karoly, School of Earth Sciences, Faculty of Science

Anita Talberg, Australian-German Climate and Energy College

Dr Robert Vertessy, Infrastructure Engineering



Alexei Trundle co-ordinates the MSSI Future Cities Research Cluster, and is a PhD Candidate at the Australian-German Climate and Energy College. He holds a Research Associate position with the UN Global Compact Cities Programme, and provides scientific advice to the UN-Habitat Cities and Climate Change Initiative in the Pacific region.

FUTURE CITIES

The Future Cities Research Cluster (FCRC) is a university research network seeking to investigate best practice and policy-relevant evidence to understand and respond to the challenges facing urban environments.

The FCRC has a focus on:

- Theoretical, conceptual and policy debates about urban futures, especially at the metropolitan scale
- Urban sustainability, resilience and connectedness
- Planning, design and governance for sustainability, equity, and community wellbeing

Highlights for 2017 include:

> Parliamentary Cities Inquiry

FCRC in partnership with Chancellery and the Faculty of Architecture, Building and Planning (ABP), led development of a submission to the Parliamentary Inquiry into the Australian Government's Role in the Development of Cities. The University provided expert witness at a public hearing in September. Represented by the University of Melbourne's Dr Julie Wells, Prof Carolyn Whitzman, Prof Stephan Winter and Prof Lars Coenen, 11 key recommendations were conveyed to the Committee with the aim of focusing national urban policy on sustainable development.

> Andy Merrifield Urban Masterclass

Internationally renowned scholar Andy Merrifield was engaged by MSSI and the Faculty of ABP for a half day masterclass in July, providing urban-focused Early Career Researchers an opportunity to workshop their projects and research proposals. Framed around the 50th anniversary of Lefevre's *The Right to the City* and Guy Debord's *Society of the Spectacle*, the session included researchers from RMIT University, as well as University of Melbourne's School of Geography and the Faculty of ABP, and was followed by an informal networking event.

> World Vision International: Research Roundtable with Joyati Das

In March, the FCRC conducted a cross-faculty roundtable with World Vision International's Director of Urban Programs, Joyati Das. The roundtable explored collaborative research opportunities between the University of Melbourne and one of the world's largest non-profit development agencies. The afternoon built on linkages made at Habitat III in 2016 through the University of Melbourne's accreditation as a Habitat Uni partner organisation.

Future Cities - Leaders

Coordinator

Alexei Trundle, Australian-German Climate & Energy College

Convenors

Prof Brendan Gleeson, Director Melbourne Sustainable Society Institute

Prof Lars Coenen, City of Melbourne Chair of Resilient Cities

Prof Chris Ryan, Victorian Eco-Innovation Lab

Prof Anne Steineman, Faculty of Engineering
Prof Mark Stevenson, Transport, Health and Urban Design Research Hub

Prof Carolyn Whitzman, Faculty of Architecture, Building and Planning

Prof Stephan Winter, Faculty of Engineering
Prof Nikos Papastergiadis, School of Culture and Communication

Prof Alison Young, School of Social and Political Sciences

A/Prof David Bissell, School of Geography

Dr Derlie Mateo-Babiano, Faculty of Architecture, Building and Planning



Prof Lars Coenen is the inaugural 'City of Melbourne Chair of Resilient Cities', an initiative between the City of Melbourne and the University of Melbourne as part of the Resilient Melbourne strategy. He is well known internationally for his work on regional and urban innovation.

Research Initiatives - selected highlights

MSSI serves as a platform for devising and managing research projects. This scholarship and engagement work develops expertise and builds capacity in key areas of sustainability research. MSSI works to attract and recruit senior academics, bringing new projects to the University.

RESILIENT CITY-REGIONS

The City of Melbourne and the University of Melbourne established a five-year professorial position to lead and coordinate academic research on resilience-building across metropolitan Melbourne. Prof Lars Coenen assumed this role in January 2017, bringing expertise in innovation studies and economic geography. His broad research program aims to both contribute to the implementation of the Resilient Melbourne strategy and to attract additional funding for research on resilient cities. In November 2017 Sebastian Fastenrath, PhD in economic geography from the University of Cologne, Germany, joined the Chair as Postdoctoral Fellow in Resilient Cities.

A resilient city requires innovation of various kinds to adapt and transform its systems for providing services such as mobility, energy and housing. But can a city plan for such innovation to happen, and if so, how? The Chair's research addresses the conditions, processes, impacts and policies needed for an innovation ecosystem that would make Melbourne more resilient. Innovation that fosters resilient city-regions will likely require a mix of technological and social ideas, and will involve new actors, while also

creating new roles for traditional participants.

The research looks closely at the role of Resilient Melbourne as a change agent and broker in the governance of an innovation ecosystem that includes all constituencies of metropolitan Melbourne, and will focus on Resilient Melbourne's ability to test and then bring into the mainstream, experimental approaches to governing a resilient city-region.

> Engagement: The 100 Resilient Cities Network Exchange saw Chief Resilience Officers (including MSSI's Lars Coenen) and their teams from Boulder, Semarang, Durban, New Orleans, and Melbourne explore what cities can do to become more resilient. As part of this visit MSSI co-hosted a public lecture with Resilient Melbourne on 'Creating Liveable and Resilient Cities by Working with Nature'.

Academics

Prof Lars Coenen and Dr Sebastian Fastenrath

Partners

City of Melbourne, Resilient Melbourne and 100 Resilient Cities

"City of Melbourne's unique partnership with the University of Melbourne through the Professorial Chair in Resilient Cities is critical to strengthening Melbourne's knowledge base to promote our metropolitan city's resilience. Professor Lars Coenen's research is helping us meet Resilient Melbourne's long term objectives, today, by examining the conditions, processes, and policies needed for an innovation ecosystem that will make our city more able to withstand a range of chronic stresses as well as shocks."

- Toby Kent, Chief Resilience Officer,
City of Melbourne.



AUSTRALIAN BUSHFIRE PREVENTION

The occurrence of bushfire is predicted to worsen with climate change. This increase in fire danger is likely to be associated with a reduced interval between fires, increased fire intensity, a decrease in fire extinguishments and faster fire spread. The implication of this is that many more fires which have been deliberately lit will become more dangerous.

Working with fire authorities, the police, Crime Stoppers Victoria (CSV), the Australian Institute of Criminology, business and local communities, this research aims to better understand the location of fires, the behaviour of the fire-lighters and the best approaches to prevent these fires occurring, especially through building the capacity of the community to take responsibility in this area.

The goal of this ARC project is to build on the knowledge gained from prior work with CSV and collaborating agencies, with three broad integrated aims that will reduce the occurrence of arson. Broadly, this project will aim to build Australia's capacity to respond to environmental change. The project will also facilitate the integration of research outcomes from biological, physical, social and economic systems. It will enable researchers to collaborate internationally and locally with the fire operational sectors, as well as the emergency services, government and the community to improve the ability to prevent bushfires.

Academics

A/Prof Janet Stanley, A/Prof Alan March, Dr Paul Read and Prof James Ogloff (Swinburne University)

Partners

Crime Stoppers Victoria

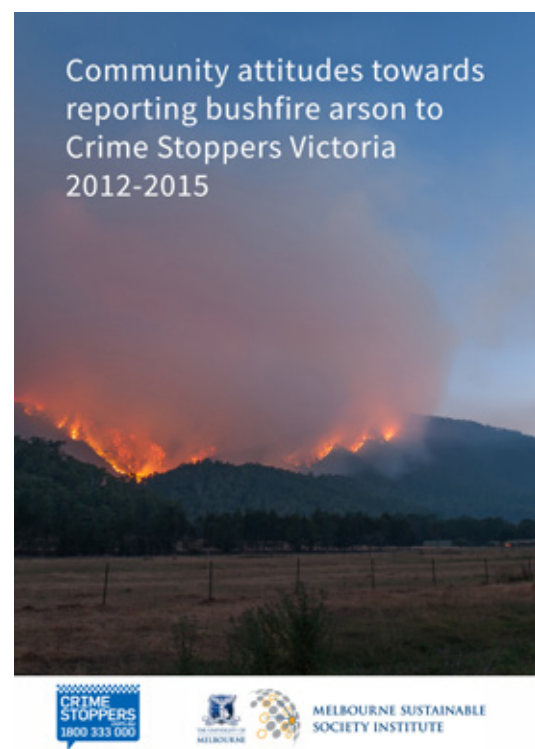
Australian Institute of Criminology

Gippsland Arson Prevention Program

> Publication: In September 2017, this project published the fifth report in a longitudinal study of reporting the crime of arson to Crime Stoppers Victoria, titled 'Community attitudes towards reporting bushfire arson to Crime Stoppers Victoria 2012-2015'.

While investigating the triggers for reporting fire-lighting, this report presents comparative data in an attempt to understand reporting trends and the community responses to raising awareness of the importance of reporting crime to Crime Stoppers.

The report presents an exploration of how the reporting of arson may differ according to both the socio-economic characteristics of regions and the personal experience of crime in general and reporting habits around this.





Stephanie Campbell
coordinates MSSl's Climate Transformations Research Cluster. She currently contributes to the six-country research project, *Coal Transitions: Research and Dialogue on the Future of Coal*, and is a PhD candidate at the Climate & Energy College.

COAL TRANSITIONS

Research and Dialogue on the Future of Coal

Strong global climate change mitigation will require a significant decline in coal use. Though Australia is still heavily reliant on coal, it has been shown that a low-carbon energy transition for our energy sector is feasible. But there will be significant economic and social ramifications, especially for regions with coal mining and coal-fired power production activities.

The Australian Coal Transitions Project is the Australian component of the international research

project, *Coal Transitions: Research and Dialogue on the Future of Coal*. This collaborative project brings together researchers from six major coal producing nations (China, India, Germany, South Africa, Poland and Australia) to explore trajectories and policy options with the potential to facilitate well managed and equitable economic transitions away from coal. The Australian component of the Coal Transitions project is led by Professor Frank Jotzo at the Australian National University's Crawford School of Public Policy, in collaboration with Professor John Wiseman (MSSI).

> Publications: As part of this project MSSI staff and associates John Wiseman, Stephanie Campbell and Fergus Green co-authored the working paper 'Prospects for a "just transition" away from coal-fired power generation in Australia: Learning from the closure of the Hazelwood Power Station' and Stephanie Campbell and Lars Coenen co-authored the working paper 'Transitioning beyond coal: Lessons from the structural renewal of Europe's old industrial regions' for policymakers at the COP23 negotiations in Bonn, Germany – both papers are available on the Centre for Climate Economics & Policy at ANU's Crawford School of Public Policy website. The findings from these papers and a future research agenda will be discussed at upcoming workshops at the University of Melbourne and ANU in 2018.



Academics

Prof John Wiseman, Stephanie Campbell, prof Lars Coenen, Prof Frank Jotzo (ANU) and Fergus Green (London)

Partners

Australian National University, The Institute for Sustainable Development and International Relations (IDDRI), France and Climate Strategies, UK



HOMELESSNESS AND HOUSING

Access to affordable housing is diminishing in Melbourne. In many locations, rental costs and purchase prices are rising at much higher rates than income growth. The flow-on effects include housing stress, mental and physical health issues, overcrowding, labour force inefficiencies and homelessness.

> Investing in Last Resort Housing: This study measured and documented the scale and geography of the growing homelessness problem in metropolitan Melbourne. It outlined new urban fiscal and policy mechanisms that could be rapidly deployed by the State of Victoria to arrest the problem and stimulate the long term provision of last resort housing in Melbourne. It was recognised that the complex problem of homelessness necessitates a cross sectoral responses that lie outside the scope of the study (health, youth and family support, employment, policing etc).

The principal partner for the project was SGS Economics & Planning, who released a joint MSSI Issues Paper outlining the results of the study. The paper found that it's cheaper to provide last resort housing to homeless people than to leave them sleeping rough. Governments and society would benefit more than they spend by providing last resort housing to homeless individuals. This is mainly through reduced healthcare costs, reduced crime, and helping people get back into employment or education.

Project Steering Group

Prof Brendan Gleeson, Prof Carolyn Whitzman, Robert Pradolin, Michael Lennon, Rob McGauran, Dr Heather Holst, Kate Raynor and Marcus Spiller.

Partners

SGS Economics & Planning, Housing Choices Australia, MGS Architects, Launch Housing and the Transforming Housing project.



> Engagement: Maximising the Social Benefits of Public Housing Renewal

MSSI's Future Cities Research Cluster facilitated a community forum in conjunction with the Transforming Housing project. Over 120 participants from community groups, NGOs, the affordable housing industry and government attended the forum which explored stakeholder perspectives on public housing renewal. Co-sponsored by MSSI and the Melbourne Social Equity Institute, the forum identified a series of recommendations for participatory and community-based engagement in government and private developer-led projects in Victoria and reported publicly as well as internally to State Government stakeholders.



Prof John Wiseman presents his session to the students of the Australian-German Climate & Energy College during their annual retreat. The retreat allows for the students to share skills, undertake workshops, practice presentations and learn methods for their PhD research.

Postgraduate Students & Early Career Researchers

MSSI is committed to fulfilling its role of instilling and promoting interdisciplinary research training in sustainability themes. To this end, the Institute supports research higher degree student initiatives by providing significant funding, thesis supervision, mentorship and casual employment opportunities.

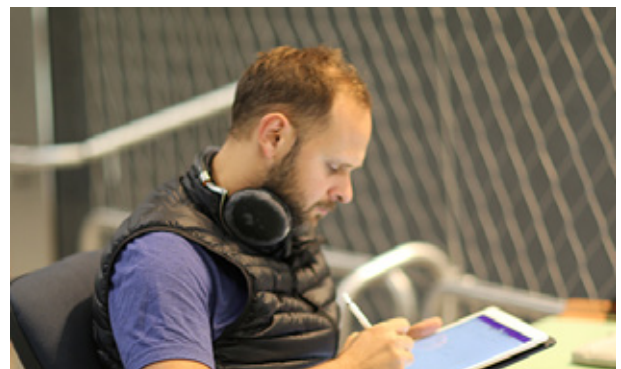
AUSTRALIAN-GERMAN CLIMATE & ENERGY COLLEGE

MSSI provides financial and in-kind support to facilitate research initiatives by the Australian-German Climate & Energy College. This international graduate college is a collaboration of the University of Melbourne and a partnership of German universities in the Berlin-Potsdam area. The College offers PhD candidates the opportunity to conduct climate and energy systems research in an interdisciplinary environment, alongside leading researchers in their respective fields.

The College also makes submissions to public inquiries, provides input to international climate negotiations, engages with media, undertakes fact checks, and conducts commissioned research for public, private sectors, and civil society groups.

In 2017 the College enjoyed another busy year, with several MSSI co-hosted events including 'Life After Hazelwood' and 'International Climate Diplomacy - the next steps' with international speakers. The College also held 26 public seminars and 18 internal events on various topics. The student numbers grew to 38 PhD candidates from different fields and in 2017, PhD candidates at the college were involved in over 26 publications and presentations and eight international visitors joined the College for periods of 1-6 months.

> **PhD Success:** Following his PhD research at the College, Martin Wainstein (pictured right) has accepted a position at Yale University in the United States, as the 2018 Open Innovation Fellow within the Tsia Center for Innovative Thinking. He will continue his focus on translating sustainability issues into innovative entrepreneurial action.



MSSI SEED FUNDING

In 2017 we provided \$20,000 for a competitive funding round within the School of Geography for early career researchers and academics. Successful applicants needed to address a theme broadly relevant to MSSI's interests. Successful projects to receive funding were: Dr Catherine Phillips, 'Valuing Melbourne's trees'; Dr Teresa Konlechner, 'Shoreline recovery following storm erosion – implications for little penguins under future climates' and Dr Sangeetha Chandrashekeran, 'Smart' Decarbonisation? The Political Economy of Smart Meter Provisioning for Low Carbon Transitions'.

'The MSSI grant the School offered earlier in the year helped considerably with this (successful ECR grant) application'

- Dr Teresa Konlechner from the School of Geography, was successfully granted ECR funding for her research on coastal erosion, as a result of MSSI seed funding.



Research Facilitation

A key MSSI role is to facilitate sustainability research, especially by fostering the development and enhancement of interdisciplinary teams. The Institute has particular carriage of research falling within its cluster areas of expertise, but it also lends its support and capacity to a wide set of other sustainability research and engagement endeavours.

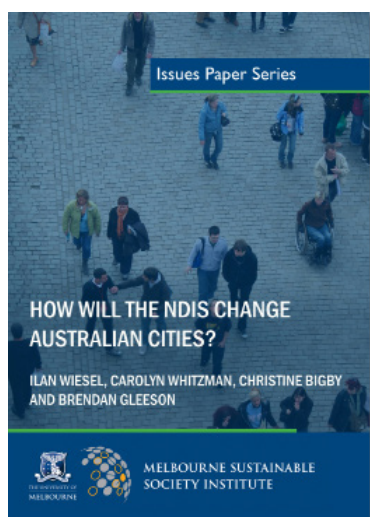
THE DISABILITY INCLUSIVE CITY

This three-year study, funded by a successful ARC Discovery Grant, is a collaboration between the University of Melbourne and La Trobe University.

The study aims to examine adjustments in urban policy and delivery of mainstream urban services in response to the National Disability Insurance Scheme (NDIS). Improving the performance of mainstream services in delivering outcomes for people with disability is a primary object of the NDIS. Focusing on participation of people with disability in mainstream housing, health and community services, the project will develop a better understanding of the factors determining both access to, and the quality of, services they receive. Analysis of variation across four urban regions will reveal the wider urban dynamics shaping these outcomes. The knowledge gained in this study will inform both urban and disability policy strategies and will advance theories of the disability inclusive city.

In 2017 MSSI published an Issues Paper as part of the development of this project.

The paper titled 'How Will the NDIS Change Australian Cities' has been downloaded more than 1500 times.



POLITICAL ECONOMY OF SUSTAINABILITY GROUP

The MSSI Political Economy of Sustainability Group was active throughout 2017. It is co-ordinated by Professor Boris Frankel and Dr Samuel Alexander and brings together approximately fifteen researchers from various universities in Melbourne, including the University of Melbourne, Deakin University and La Trobe University. The group's primary objective is to explore environmental sustainability from the perspective of political and socio-economic issues. During 2017 it facilitated the presentation and discussion of current research undertaken by members of the group as well as discussion of new publications of interest to the group. The Political Economy of Sustainability Group will continue meeting during 2018 and its lively discussions have already attracted the attention of other scholars requesting to join the group. The group also aims in the future to invite speakers to make public presentations to a wider audience.

THE ENERGY TRANSITION HUB

The Energy Transition Hub is an Australian-German Climate and Energy College initiative established in 2017. The Hub will generate collaborative and world-leading research to help the technical, economic and social transition to new energy systems and a low emissions economy. The Energy Transition Hub has been awarded initial funding of \$4 million by the Department of Foreign Affairs and Trade. Prof John Wiseman has significantly contributed to developing the work program and prospectus of the Hub.



Catherine Brown, CEO of the Lord Mayor's Charitable Foundation, pictured with Prof Don Henry

Bids and Grant Writing

MSSI is a key component of the University of Melbourne's multifaceted approach to catalysing collaborations. The Institute complements the breadth and strength of the University's research disciplines by connecting researchers around problems of significant impact upon a sustainable future.

MSSI researchers are international leaders in their fields. They bring an inter-disciplinary depth of skill and experience to fostering networks and connections, identifying relevant opportunities for collaboration, brokering partnerships, influencing research design and developing high quality grants and funding proposals. A cross-section of these are included below:

> **The Disability City, ARC Discovery Project**

MSSI Director Brendan Gleeson is a Chief Investigator on this successful grant, which aims to examine adjustments in urban policy and delivery of mainstream urban services in response to the National Disability Insurance Scheme (NDIS). The bid grew from a MSSI Issues Paper 'How will the NDIS Change Australian Cities', also published in 2017. Focusing on participation of people with disability in mainstream housing, health and community services, the project will develop a better understanding of the factors determining both access to, and the quality of, services they receive. It is funded by the Australian Research Council (ARC) for \$425,998 over three years.

> **How digital on-demand mobile work is transforming Australian cities, ARC Future Fellowship**

MSSI Future Cities Cluster Convener A/Prof David Bissell, based in the School of Geography, was awarded this fellowship, which will examine how the rapid rise of digital on-demand mobile work is transforming Australian cities by evaluating its diverse impacts on consumers, workers and industries. With \$881,211 of ARC funding across 2017 to 2021, his fellowship will also support three PhD students.

> **Energy Transition Hub**

This hub is a Department of Foreign Affairs and Trade (DFAT) initiative of \$4 million over five years. It is a

collaboration between the University of Melbourne, Australian National University, Potsdam Institute for Climate Impact Research (PIK), Münster University's Centre of Applied Economic Research, and the Mercator Research Institute of Global Commons and Climate Change (MCC). Researchers from Murdoch University, RMIT, Monash University, the German Aerospace Centre DLR, DIW and the Hertie School of Governance are also involved. In addition to MSSI providing direct assistance with the DFAT proposal and annual financial support to the Hub host (the Australian-German Climate and Energy College), MSSI researchers are involved in Hub projects, industry partner brokerage, and internal Hub Board membership.

> **Lord Mayor's Charitable Trust, Foote Climate Solutions Research Fellowship**

MSSI secured this \$250,000 Fellowship to support work around strengthening Australian state-based climate change approaches. Key impact measures include the development of expert briefing papers on learnings from climate solutions with Australian States and key countries, and the conduct of one-on-one briefings and high level expert roundtables engaging climate solution experts, governments, business and civil society.

> **First Women in Transportation Leadership Workshop**

Future Cities Cluster Convener Derlie Mateo-Babiano co-hosted a workshop at the National Centre for Transportation Studies, University of the Philippines Diliman. Following this forum an application was submitted to USAID, and further funding submissions are planned to the Eastern Asia Society for Transportation Studies and Australian Research Council.



The Resilient Melbourne team on a local alternative housing tour with international scholars. From left: Andrea Sharam, Toby Kent, Tom Alves, Lars Coenen, Joerg Knieling, Barney Wilson, Matt O'Rourke, Sebastian Fastenrath, Heidi Sinning, Kate Raynor and Katie Skillington.

Partnerships & Collaborations

MSSI works to advance the University's commitment to public value. By forming and deepening relationships with external partners, the Institute can enhance research according to this public-spirited ethos. MSSI has established partnerships with peak agencies, institutions and organisations.

> Resilient Melbourne/ 100 Resilient Cities

The Resilient Melbourne project is auspiced by the City of Melbourne in collaboration with the councils that make up Greater Melbourne, and many associated partners including MSSI. The aim is to help cities around the world prepare to meet the physical, social and economic challenges that are a growing part of the 21st century. In 2017 Resilient Melbourne hosted their first Open House as part of the Mayors and CEOs meeting to showcase our partner organisations and their contributions to building a resilient Melbourne. The Open House was a chance for MSSI's Lars Coenen and Sebastian Fastenrath to share their work with council leadership, our broader network and each other. In addition to this, experts from around the world met in Melbourne in February 2017 to explore how to transform cities through nature. This 100 Resilient Cities Network Exchange saw Chief Resilience Officers (including MSSI's Lars Coenen) and their teams from Boulder, Semarang, Durban, New Orleans, and Melbourne explore what cities can do to become more resilient.

> **CLIMARTE** is an independent not-for-profit organisation that harnesses the creative power of the arts to inform, engage and inspire action on climate change. In 2017 MSSI co-partnered with CLIMARTE to host various events within their biannual ART+CLIMATE =CHANGE Festival. MSSI was a key supporter of the EXIT exhibition, which was a 360-degree installation that visually correlated global human migratory trends with urgent social and economic issues. It was attended by over 25,000 people.

> **Climate-KIC Australia** is a Knowledge Innovation Community dedicated to creating a climate resilient, liveable and thriving Australia for all by catalysing transformative, cross-sectoral responses

to climate change. Modelled on its counterpart in Europe, Climate-KIC Australia offers a new way to link research, business, entrepreneurs, investors and government to facilitate systemic change which addresses the challenges and harnesses the opportunities of climate change. Climate-KIC aims to act as a catalyst for demand-led, systems scale climate solutions by connecting key players across the whole innovation pathway. Prof. Lars Coenen was nominated as the UOM representative on the Operational Group of Climate-KIC Australia.

A selection of other groups who worked with MSSI in 2017:

- > Melbourne Organising Committee for Ecocity World Summit. Key partners include Government of Victoria, City of Melbourne, C40, ICLEI, QANTAS, Climate Chance (France)
- > Sustainability Victoria
- > Transitions Film Festival
- > Rescope Project
- > Centre for Policy Development
- > Dumbo Feather magazine
- > Arts House/Refuge
- > The Climate Council
- > Department of Environment, Land, Water and Planning
- > Sustainable Living Festival
- > Land Art Generator Initiative



A panel discussion to celebrate ten years of The Climate Reality Project, with founder Al Gore. Pictured (from left); Don Henry, Kirsty Costa, Al Gore, Darrel Wade, Linh Do and Vanessa Morris.

Engagement

MSSI holds engagement on sustainability issues as central to our value of sharing knowledge. Extending our engagement with communities beyond the University is fundamental to increasing our impact and influence. It also brings complementary skills, resources and ambition, enriching the value of our research.

THE CLIMATE REALITY PROJECT

MSSI is excited to now host former US Vice President Al Gore's climate change leadership program in the Australia and Pacific region here at the University of Melbourne. Building upon a decade of knowledge translation and science communication work, The Climate Reality Project (TCRP) supports individuals in their journey towards catalysing climate change action.

Deeply rooted in physical and social sciences, TCRP supports over 750 individuals, from business, government and civil society, to spread climate change awareness and solutions. To date, their presentations have directly reached 1 in 40 Australians.

TCRP's first year at the Institute was a success, with their engagement reaching every corner of the country. TCRP organised over twenty events across Australia, including working with Paramount to premiere Mr Gore's most recent film 'An Inconvenient Sequel: Truth to Power' in both Melbourne and Sydney. Excluding

media, their direct engagements reached over 10 000 individuals.

Beyond working directly with Climate Reality Leaders (individuals who have been personally trained by Mr. Gore) TCRP also had the pleasure of hosting their founder and chairman for a week. This period culminated in an event celebrating ten years of The Climate Reality Project, with individuals who have been involved since its inception in late 2006.

TCRP also supported Mr. Gore's keynote presentation to the Ecocity conference alongside the signing of the Climate Leadership Declaration by the Victorian, ACT, Queensland and South Australian governments.

This work would not have been possible without the generous philanthropic support of the Intrepid Foundation, Lord Mayor's Charitable Foundation, and The Climate Reality Project. In 2018, TCRP is looking forward to building on newly established foundations with a specific focus on increasing diversity within their environmental engagement.



Linh Do with the Climate Reality Project volunteers at the organisation's ten year celebration. From left: Malcolm Johnson, Matthew Nguyen, David Jeffery, Dat Do, Max Ricker, Marie Schega and Linh Do.



Research and Policy Roundtable with the Hon Al Gore

IMPLEMENTING THE PARIS AGREEMENT

This engagement initiative is led by Prof Don Henry and a key focus in 2017 was to harness the University's research expertise to strengthen policy action in the implementation of the Paris Climate Agreement. The Paris Agreement makes specific reference to the crucial role played by states and cities in tackling climate change.

As part of this, MSSl hosted a visit by the Hon Al Gore in a series of engagements to encourage action on climate change. With MSSl, Mr Gore met with the state governments of Victoria, South Australia, Queensland, NSW and the ACT to discuss stronger collaboration among the states on climate policy (pictured below).



The Ministers agreed and signed a Climate Leadership Declaration, to foster state collaboration on a number of areas of state climate policy including buildings and transport, which was informed by policy analysis from the University of Melbourne and Monash University.

Mr Gore also joined Lily D'Ambrosio, Victorian Minister for Energy, Environment and Climate Change and Arron Wood, Deputy Lord Mayor on one of Melbourne's new solar trams, to launch the Victorian Renewable Energy Action Plan. This plan includes funding for a new large-scale solar initiative to provide the equivalent of 100% renewable energy for Melbourne's tram network, the largest in the world.

INDIGENOUS LAND AND CULTURE

Prof Don Henry leads this project, collaborating with Aboriginal Traditional Owners and indigenous leaders in the implementation of the Cape York Peninsula Tenure Resolution Program, ensuring the protection of iconic natural areas and cultural values. Return of the lands to indigenous traditional owners, with their consent and leadership, is an important part of protecting Australia's cultural values and environmental heritage.

Don Henry has been working jointly with indigenous groups to analyse and make recommendations for the future, based on the land tenure resolution program that has unfolded over the last 15 years on Cape York Peninsula.

Over 3 million hectares of country has been purchased from voluntary sellers and returned to traditional owners who have established new Aboriginal National Parks to protect culturally and environmentally significant sites across many of these lands.

Land management regimes have been put in place and jobs generated through an indigenous ranger program. Much needs to be learned from these communities and more needs to be done on Cape York to meet Aboriginal Traditional Owner aspirations.





During his visit, the University of Melbourne awarded the Hon Al Gore a Honorary Doctorate of Laws. University Chancellor, Allan Myers AC QC, conferred the degree in recognition of Mr Gore's exceptional contributions to public service in an international field and his decades-long work in 'empowering all people to participate in the conversation about effective, urgent and just climate change action'.

Visiting Scholars

The visits that MSSI organises, sponsor and host bring the world of sustainability research excellence to the University. These visitors are strategically chosen and invited so that they can collaborate with the research community, provide seminar presentations, roundtable discussions, masterclasses and mentoring for students, as well as free lectures for the general public.

VISITING SCHOLARS

> Research Roundtable with Al Gore

In July, we hosted a Research Roundtable coinciding with the EcoCity World Summit and the visit to Australia by the Hon Al Gore. Chaired by Prof Robyn Eckersley, the roundtable brought together international academics and policy experts from South Africa, Indonesia, India, Fiji, France, China, UK and Australia to deliver expert knowledge to policymakers. Also participating were the President's Climate Envoy from Indonesia, leading corporate and civil society representatives, the premier of South Australia and the Deputy Premier of Queensland.



The roundtable also identified key gaps and opportunities to enhance implementation of the Paris Climate Agreement. This included tracking and verifying emissions and action, the involvement of Australian cities and states, rapid sharing of policy learnings and energy and climate finance. Into the future, Professor Don Henry will engage and connect with Mr Gore at international negotiations in support of his efforts in countries key to the Paris Climate Agreement.

Other visiting scholars in 2017 include:

- > **Prof Tom Pedersen** from the University of Victoria, British Columbia presented a seminar as part of our Climate Conversations series 'The rise and fall of British Columbia'.
- > **Prof Annica Kronsell**, visited MSSI from Lund University Sweden. She presented a seminar on 'Municipalities in Urban Living Labs'.
- > **A/Prof Thaddeus Miller** from Arizona State University presented a seminar on 'Knowledge systems for urban resilience'.
- > **Prof Joerg Knieling and Prof Heidi Sinning** joined MSSI for a period of two months and collaborated with University researchers on similar areas of research interest. They both presented seminars on topics of urban resilience (pictured below).





Don Henry is an Enterprise Professor of Environmentalism at MSSI. He provides leadership and vision in the fields of environmental policy development and reform, climate change, and sustainability. Don is a Board Member of The Climate Reality Project and is the strategy advisor to its founder, the Hon Al Gore.

INTERNATIONAL DELEGATIONS

MSSI hosted a number of international delegations to collaborate on best practice research related to our themes.

> EU World Cities Exchange

Prof Lars Coenen has been one of the delegates in the EU World Cities exchange between Hamburg (Germany) and Melbourne. During the one-week visit by the Hamburg delegation to Melbourne MSSI organised a multi-stakeholder roundtable on 'Urban innovation for resilient cities'.

> University of California, Davis

A/Prof Janet Stanley and Prof David Karoly met with Prof Ralph Hexter, Provost and Executive Vice Chancellor, and Prof Joanna Regulska, Provost and Executive Vice Chancellor for Global Affairs, from the University of California, Davis. They were visiting to discuss how to build on and strengthen the links and established relationships with the University of Melbourne and explore new areas for collaboration.

> University of Washington

Prof Brendan Gleeson met with A/Prof Rachel Berney and colleagues from the University of Washington to inform their study of planning in Metropolitan Melbourne

> Government of Assam, India

Prof Brendan Gleeson met with senior delegates from the Government of Assam, India to discuss the progress of the current Smart Villages project with the Faculty of Architecture, Building and Planning.

> Local Housing Board & Sanguniang Panglungsod

Twelve representatives from the Local Housing Board and Sanguniang Panglungsod of Makati City visited from the Philippines and met with A/Prof Janet Stanley and Prof Carolyn Whitzman. This was part of a tour of various universities to broaden their understanding of research and latest trends around urban planning, public transport and housing in the context of growing cities and increasing inequities.

> **Senator Ronan Dantec**, French Senator for the Loire visited MSSI as part of his participation in the Ecocity World Summit and to collaborate with researchers on climate change issues.

> **Sherri Goodman**, former United States Undersecretary for Defence. MSSI participated in and co-hosted a roundtable with the Centre for Policy Development (CPD) on Australia's climate security challenges (pictured below). Sherri is leading work on security implications of climate change in the US. Her visit attracted media interest, including an interview on ABC Radio National.



> **Chongqing Environmental Protection Bureau, China** Prof Brendan Gleeson and Prof John Wiseman met with senior officers from Chongqing Environmental Protection Bureau, China, and discussed the nature of Environmental Policy and Governance in Australia.

> **Justin Maxson and Lisa Abbott**, Executive Director of the Mary Reynolds Babcock Foundation and co-ordinator of the Kentuckians for the Commonwealth respectively. Their visit to MSSI has led to the development of the MSSI-Environment Victoria symposium on coal transitions.

> **Land Art Generator Initiative (LAGI)** led by LAGI Directors Elizabeth Monoian & Robert Ferry. Prof John Wiseman hosted this visit to facilitate links between the 2018 LAGI Melbourne competition and Faculty of Architecture Building and Planning.

The Ecocity World Summit brought together 1000 delegates from over 30 countries making it the largest event of its kind ever to be held in Australia.



Events

MSSI staged 25 in-house events in 2017. This included 1 international conference; 16 seminars, workshops and roundtable meetings; 6 public lectures or forums and 2 book launches. In addition, MSSI was a key partner in a number of events involving other University units or external parties.

ECOCITY WORLD SUMMIT

A major success for MSSI in 2017 was hosting the Ecocity World Summit in Melbourne from 12-14 July. This global Summit was a collaboration between MSSI and Western Sydney University's Institute for Culture and Societies, and was generously hosted by The State of Victoria and the City of Melbourne. Nearly 1000 delegates from over 30 countries delivered and engaged with over 300 presentations on many conceptual and practical aspects of sustainable urbanism.



When the Summit wrapped up, what became clear was the sheer number of ideas, debates and collaborations that were generated at the Summit both in and out of sessions. Conversations between academics, business leaders and government representatives reverberated around the conference walls, transcending the constraints that have traditionally separated them.

MSSI was delighted to present the Hon Al Gore as the keynote speaker at the Summit, whose world-renowned slideshow attracted an audience of more than 2300.

The program consisted of 6 plenary sessions and 98

concurrent sessions over the 3 days that were split into three 'streams': Urban Leadership, Academic and City Practice.

Other notable speakers included: Mr Aromar Revi, Dr Debra Roberts, HE Mr Yogesh Punja, Prof Kate Auty, Prof Harriet Bulkeley, Dr Kevin Austin, Prof Katherine Gibson and Mr Rachmat Witoelar, the Indonesian President's Special Envoy for Climate Change.

> 1000 Trees: We decided that rather than provide a gift to speakers, the Summit would collaborate with Melbourne Water and local volunteer conservation groups to regenerate wetlands and riparian areas along the Maribyrnong River. Summit presenters and organisers, along with members from Melbourne Water, Maribyrnong Shire Council, volunteers and students from Footscray Secondary College came together to plant 600 shrubs and 400 trees - a total number of plantings symbolic of the number of delegates that attended the Summit.





PUBLIC LECTURES

> Tim Flannery on Cities & Climate Change Solutions

MSSI in collaboration with The Climate Council presented this public lecture on the climate impacts that cities now face. Our Honorary Fellow Prof Tim Flannery explored the action being taken by cities, including The Climate Council's new cities program, as well as unpacking some of the new technologies being developed to drastically reduce emissions. In addition to the full lecture theatre, the event was livestreamed on social media to an audience of more than 73 000.



> **Creating Liveable and Resilient Cities by Working with Nature.** MSSI co-hosted this event with Resilient Melbourne. Speakers included Prof Lars Coenen and Chief Resilient Officers from New Orleans, Durban, Semarang, Boulder and Melbourne.

> Tracking Progress on Health & Climate Change.

This forum marked the launch of the Lancet's first progress report on climate change and health. Speakers included A/Prof Grant Blashki, Prof Mark Stevenson, Prof Rob Moodie, Dr Kathryn Bowen, Fiona Armstrong and Dr John Iser.

SEMINAR SERIES

Our Climate Transformations Research Cluster held a seminar series throughout the year, to engage researchers from various faculties on topics related to climate change issues.

> Climate Activism in the Time of Trump

As part of its Climate Conversations series, the CTRC co-hosted an all-female panel to discuss reflections as leaders at the forefront of the Australian climate advocacy movement. The panellists drew on their rich experience across a range of organisations in Australia's climate activist movement to share their perspectives on the challenges and successes of recent initiatives, the lessons that they've taken from these experiences, and their view on what these mean for the future direction and priorities for climate activism in Australia. This conversation was presented in partnership with Dumbo Feather magazine and was recorded as a podcast as part of Dumbo Feather's special issue on climate change and the environment in 2017.



Panel: Climate Activism in the Time of Trump. From left; Anna Rose, Katerina Gaita, Victoria McKenzie-McHarg and Kirsty Albion.

Other seminars in the Climate Conversations series include:



Samuel Alexander launches his book 'Art Against Empire: Toward an Aesthetics of Degrowth'

> The Climate State: Global Warming, Fiscal Crisis and the Future of the Welfare State.

Speaker: A/Prof Peter Christoff, School of Geography.

> Negative Emissions: Potentials and Challenges

Speakers: Kate Dooley, Rachelle Meyer and Nasim Pour from the Australian-German Climate & Energy College.

> Climate and Culture

Speaker: Guy Abrahams, Co-founder and CEO of CLIMARTE and Director of the Art+Environment consultancy.

> The Rise and Fall of Climate Action in British Columbia

Speaker: Tom Pedersen, Professor of Paleoclimatology and Marine Geochemistry at the University of Victoria, Canada.

BOOK & REPORT LAUNCHES

> How Great Cities Happen: Integrating People, Land Use and Transport.

Authors: Janet Stanley, John Stanley and Roslynn Hansen.

> Art Against Empire: Toward an Aesthetics of Degrowth

Author: Samuel Alexander. In this book, degrowth scholar Dr Alexander curated over 170 'culture jamming' works of art that challenge consumerism, the growth economy and postmodern relationships to technology, while also provoking thought about different, ecologically viable modes of living and being. The book was launched by Matt Wicking, from the band The General Assembly, who performed a song to open and close the proceedings.

ROUNDTABLE MEETINGS

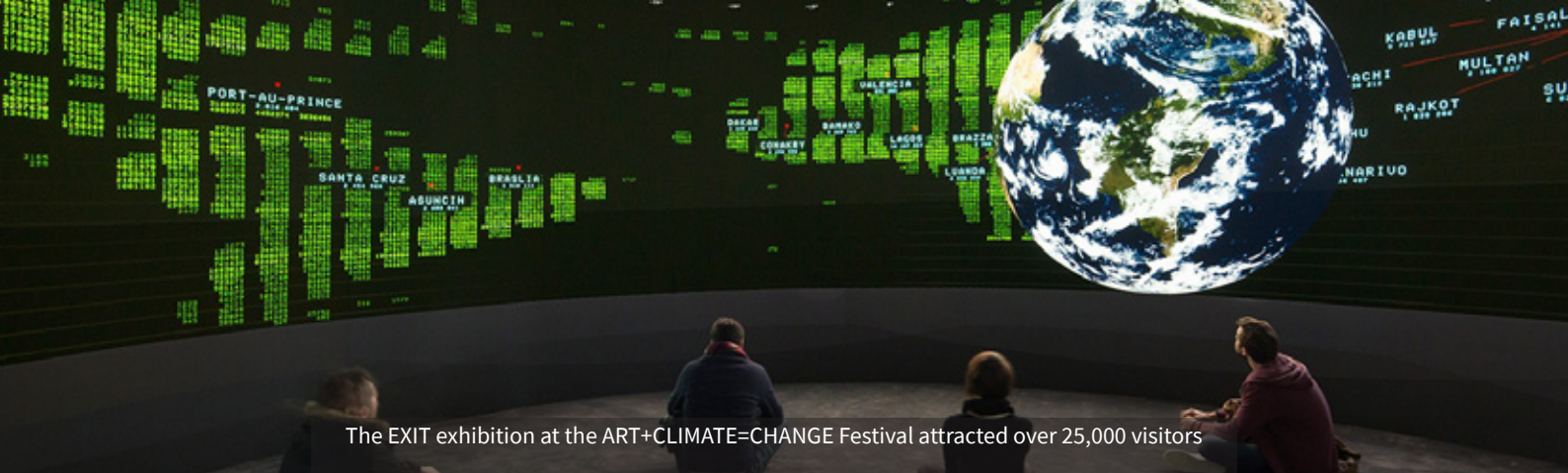
> Implementing the Paris Agreement

A high-level roundtable with the Hon Al Gore, Former US Vice-President, brought together representatives from Australian and foreign national, state and local governments and parliaments, Australian universities, international organisations, business and NGOs.

> Future Cities Research Roundtable

With Joyati Das, Senior Director of Urban Programmes World Vision International (pictured below).





The EXIT exhibition at the ART+CLIMATE=CHANGE Festival attracted over 25,000 visitors

SUPPORTED EVENTS

In 2017 MSSI was pleased to sponsor the following events and festivals.

> Life After Hazelwood

Speakers: Dr. Sara Bice, Dr. Gavin Mudd, Ben Davison, and Marianne Robinson. Organised by the Australian-German Climate & Energy College.

> Plastic Bag Charges, Habit Disruption and Spillover Effects

Speaker: Prof Wouter Poortinga, Environmental Psychology at Cardiff University.

> Maximising the Social Benefits of Public Housing Renewal

Speakers: Prof Carolyn Whitzman, Dr Matt Palm and Dr Kate Shaw from the University of Melbourne; Lesley Dredge, Community Housing Federation of Victoria; Dr Belinda Robson, City of Yarra; Mark Feenane, Victorian Public Tenants Association; Hamdi Ali, Carlton Housing Estate Residents' Services and chaired by Mark O'Brien, CEO of the Tenants Union of Victoria

Rescope Project at the Sustainable Living Festival

> Beyond Growth As We Know It

Speaker: Satyajit Das, former financier and best-selling author.

> Redefining Progress

Speakers: Tim Costello AO, Chief Advocate for World Vision; Dr Melissa Weinberg, Dr Mike Salvaris and moderated by MSSI's Prof Brendan Gleeson.

> Renewable Energy and Beyond

Speakers: Richard Heinberg, author and Senior Fellow of the Post Carbon Institute; Josh Floyd, Dr Andrea Bunting and moderated by MSSI's Prof John Wiseman.

ART+CLIMATE=CHANGE

> Avowing the Political: Art and Social Change

Speaker: Edward Morris, Artist and co-founder of The Canary Project.

> EXIT Exhibition

A 360-degree installation that visually correlated global human migratory trends with urgent social and economic issues. Attended by over 25,000 people.

Transitions Film Festival

MSSI supports this annual film festival, which showcases inspirational documentaries about solutions to society's greatest challenges and the change makers who are building a better world. Each film is followed by a Q&A between the audience and key experts, many of whom are from MSSI. The films that we were involved in included: 'A New Economy', 'Energy Rebellion' and 'Power to Change'.





Publications

MSSI has developed a series of publications aimed at showcasing new and exciting sustainability knowledge. The papers are subject to an internal academic review process. The aim of the publication series is to stimulate thought and discussion within the University of Melbourne and in the broader community.

BRIEFING PAPERS

MSSI's Briefing Papers are intended to translate research findings on a range of sustainability topics for a wide audience. In 2017 we continued our focus on a series of briefing papers that examine the climate change policies of the countries key to the Paris Agreement and its effective and ongoing implementation.

- > Parr, B., Young, C. & Henry, D. (2017) **Opportunities for a low pollution economic recovery in Brazil**, MSSI Briefing Paper No. 8, Melbourne Sustainable Society Institute, University of Melbourne.
- > Parr, B., Paterson, M. & Henry, D. (2017) **Opportunities and challenges for Canada to exceed its Paris Agreement target**, MSSI Briefing Paper No. 9, Melbourne Sustainable Society Institute, University of Melbourne.

ISSUES PAPERS

Our Issues Paper series strives to inform and stimulate public conversation about key sustainability questions facing our society. Each paper encapsulates the insights of a thinker or practitioner in sustainability.

- > Stone, J., Ashmore, D. & Kirk, Y. (2017) **Protecting the long term public interest in Melbourne's rail franchise**, MSSI Issues Paper No. 8, Melbourne Sustainable Society Institute, The University of Melbourne.
- > Wiesel, I., Whitzman, C., Bigby, C. & Gleeson, B. (2017) **How will the NDIS change Australian cities**, MSSI Issues Paper No. 9, Melbourne Sustainable Society Institute, The University of Melbourne.

- > Witte, E. (2017) **The case for investing in last resort housing**, MSSI Issues Paper No. 10, Melbourne Sustainable Society Institute, The University of Melbourne.

- > Merrifield, A. (2017) **Double indemnity urbanism**, MSSI Issues Paper No. 11, Melbourne Sustainable Society Institute, The University of Melbourne.

REPORTS

- > Campbell, S., Coenen, L. (2017), **Transitioning beyond coal: Lessons from the structural renewal of Europe's old industrial regions**, CCEP Working Paper 1709, November 2017.
- > Read, P. & Stanley, J. (2017) **Community Attitudes Towards Reporting Bushfire Arson to Crime Stoppers Victoria 2012-2015**, Crime Stoppers Victoria, Melbourne Sustainable Society Institute, University of Melbourne.
- > Stanley, JR & Stanley JK (2017) **Improving mobility opportunities in Regional South Australia: Case studies from the Riverland, Mount Gambier and Port Pirie**, unpublished report to SA Government.
- > Wiseman, J., Campbell, S. and Green, F. **Prospects for a 'just transition' away from coal-fired power generation in Australia: Learning from the closure of the Hazelwood Power Station**, CCEP Working Paper 1708, Crawford School of Public Policy, Australian National University, November 2017.

MONOGRAPH

- > Alexander, S. (2017) **Degrowth as an Aesthetics of Existence**, MSSI Monograph, Melbourne Sustainable Society Institute, The University of Melbourne.



BOOKS

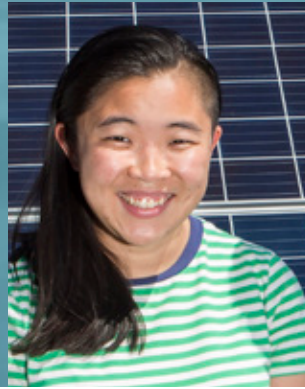
- > Alexander, S. (2017) **Art Against Empire: Toward an Aesthetics of Degrowth**. Simplicity Institute, Melbourne.
- > Alexander, S. (2017) **Compost Capitalism: The Art and Aesthetics of Degrowth**. Simplicity Institute, Melbourne.
- > Alexander, S. (2017) **Wild Democracy: Degrowth, Permaculture, and the Simpler Way**. Simplicity Institute, Melbourne.
- > Alexander, S., & Ussher, S. (2017) **Words for Awakening: Voices of Inspired Revolt**. Simplicity Institute, Melbourne.
- > Frantzeskaki, N., Castan Broto, V., Coenen, L., & Loorbach, D. (Eds.). (2017). **Urban Sustainability Transitions**. Routledge, New York.
- > Moore, T., de Hann, F., Horne, R. & Gleeson, B.J. (eds.) (2017) **Urban Sustainability Transitions: Australian Cases – International Perspectives**. Springer, New York.
- > Stanley, J.K. & Stanley J.R. and Hansen, R. (2017) **How Great Cities Happen: Integrating People, Land Use and Transport**. Edward Elgar, UK.

Book Chapters

- > Alexander, S. (2017) **Frugal Abundance in an Age of Limits: Envisioning a Degrowth Society**, in Garcia, E., Martinez-Iglesias, & Kirby, P. *Transitioning to a Post-Carbon Society: Degrowth, Austerity, and Wellbeing*, Palgrave Macmillan, London, 159-179.
- > Alexander, S. and Wiseman, J. (2017) **The Degrowth Imperative: Reducing Energy and Resource Consumption as an Essential Component in Achieving Carbon Budget Targets**, in Garcia, E., Martinez-Iglesias, & Kirby, P. *Transitioning to a Post-Carbon Society: Degrowth, Austerity, and Wellbeing*, Palgrave Macmillan, London, 87-108.
- > Alexander, S. (2017) **The Paradox of Oil: The**

Cheaper it is, the More it Costs, in Dodson, J., Sipe, N., & Nelson, A. *Planning After Petroleum: Preparing Cities for the Age Beyond Oil*, Routledge, London, 24-36.

- > Alexander, S. and Rutherford, J. (2017) **The Transition Towns Movement as a Model for Urban Transformation**, in Moore, T., de Haan, F., Horne, R. and Gleeson, B.J. *Urban Sustainability Transitions: Australian Cases – International Perspectives*, Springer, Singapore, 173-189.
- > Coenen, L., Campbell, S. & Wiseman, J. (2018) **Regional Innovation Systems and Transformative Dynamics: Transitions in Coal Regions in Australia and Germany**, in *New Avenues for Regional Innovation Systems – Theoretical Advancements, Empirical Cases and Lessons for Policy*, Springer Publishing.
- > Gleeson, B.J. (2017) **The Metropolitan Condition in Hamnett, S. & Freestone, R. (eds) Planning Metropolitan Australia**, Routledge, Abingdon, UK, 170-186.
- > Gleeson, B.J. (2017) **A Dangerous Transition to Hope**, in Moore, T., de Hann, F., Horne, R. & Gleeson, B.J. (eds.) *Urban Sustainability Transitions: Australian Cases-International Perspectives*, Springer, New York, 35-49
- > Grin, J., Frantzeskaki, N., Castan Broto, V. & Coenen, L. **Sustainability Transitions and the City: Linking to Transition Studies and Looking Forward**, in Frantzeskaki, N., Castan Broto, V., Coenen, L., & Loorbach, D. (Eds.). (2017). *Urban Sustainability Transitions*. Routledge, New York.
- > Horne, R., Moore, T., de Haan, F. & Gleeson, B.J. (2017) **Urban Sustainability Transitions: An Emerging Hybrid Research Agenda**, in Moore, T., de Hann, F., Horne, R. & Gleeson, B.J. (eds.) *Urban Sustainability Transitions: Australian Cases-International Perspectives*, Springer, New York, 253-7.
- > Stanley, J. (2017) **Equity in Recovery**, in A. March, & M. Kornakova (Eds.) *Urban Planning for Disaster Recovery*, pp. 31-46, Elsevier, UK.



Linh Do is The Climate Reality Project lead in Australia, an international organisation founded by Al Gore. Linh has spent the last decade working primarily on environmental issues, with a focus on the UN climate change negotiations process. She was named Australian Geographic Young Conservationist of the Year in 2013.

JOURNAL ARTICLES

- > Alexander, S., Rutherford, J., & Floyd, J. (2017). **A Critique of the Australian National Outlook Decoupling Strategy: A Limits to Growth Perspective**, *Ecological Economics*, 145: 10-17.
- > Alexander, S. & Burdon, P. (2017) **Wild Democracy: A Biodiversity of Resistance and Renewal**, *Ecological Citizen* 1, 45-54.
- > Bauer, F., Coenen, L., Hansen, T., McCormick, K., & Palgan, Y. V. (2017) **Technological innovation systems for biorefineries: a review of the literature**. *Biofuels, Bioproducts and Biorefining*, 11: 534–548
- > Boschma, R., Coenen, L., Frenken, K., & Truffer, B. (2017). **Towards a theory of regional diversification: combining insights from Evolutionary Economic Geography and Transition Studies**, *Regional Studies*, 51(1), 31-45.
- > Bugge, M., Coenen, L., Marques, P., & Morgan, K. (2017) **Governing system innovation: assisted living experiments in the UK and Norway**, *European Planning Studies*, 25(12), 2138-2156.
- > Cao, D., Stanley, J. and Stanley, J. (2017) **Indicators of socio-spatial transport disadvantage for inter-island transport planning in rural Philippine communities**, *Social Inclusion*, 5(4) 116-131.
- > Coenen, L. (2017) **From sustainable to resilient regions? Shifting conceptualisations of regional futures: a closing review**, *Australasian Journal of Regional Studies*, 23(3) 447-451
- > Davidson, K. & Gleeson, B.J (2017) **New socio-ecological imperatives for cities: possibilities and dilemmas for Australian metropolitan governance**, *Urban Policy & Research*, 1-12, Published online: 13 Sep 2017.
- > Fevolden, A. M., Coenen, L., Hansen, T., & Klitkou, A. (2017). **The role of trials and demonstration projects in the development of a sustainable bioeconomy**, *Sustainability*, 9(3), 419-434.

- > Spencer, T. Colombier, M., Sartor, O., Garg, A., Tiwari, V., Burton, J., Caetano, T., Green, F., Teng, F. & Wiseman, J. **The 1.5°C target and coal sector transition: at the limits of societal feasibility**, *Climate Policy*, Dec 2017.
- > Stanley, J. R. & Stanley, J. K. (2017) **The importance of transport for social inclusion**, *Social Inclusion*, 5(4) 108-115.
- > Wesseling, J. H., Lechtenböhmer, S., Åhman, M., Nilsson, L. J., Worrell, E., & Coenen, L. (2017). **The transition of energy intensive processing industries towards deep decarbonization: characteristics and implications for future research**, *Renewable and Sustainable Energy Reviews*, 79, 1303-1313.

CONFERENCE PAPERS

- > Lowe, C., Stanley, J. & Stanley, J. (2017) **A Broader Perspective on Social Outcomes in Transport**, Thredbo, International Conference Series on Competition and Ownership in Land Passenger Transport, 13-17 August, Stockholm, Sweden.
- > Stanley, J.K. & Stanley, J.R. (2017) **Social exclusion: the roles of mobility and bridging social capital in regional Australia**, Thredbo, International Conference Series on Competition and Ownership in Land Passenger Transport, 13-17 August, Stockholm, Sweden.



Outreach

2017 AT A GLANCE



45

publications

authored or published by MSSl

25
events

seminars
roundtables
conferences



36

**collaborative
partnerships**



73

**presentations by
MSSl people**



19

**visiting scholars
& international delegations**

3675



**downloads of MSSl
publications**



87

direct media mentions

3700

Missive subscribers



34k

visits to our website



Media and Communications

MSSI has devoted resources and expertise to the production and dissemination of research for a diverse public and professional audience. Our contribution to public policy and debate on matters of national priority now span both the traditional and digital landscapes.

In 2017 MSSI academics were regularly featured in the media. Our experts authored or were interviewed in:

- > 52 news stories online and in print
- > 22 radio interviews
- > 6 TV appearances
- > 6 YouTube videos

OUR AUDIENCE

MSSI increased our audiences on all platforms. We communicate our news fortnightly, and this year subscribers to the email newsletter increased by 20%. The newsletter has an exceptionally high open rate (35%) compared to an industry average of 5%.

The MSSI website is regularly updated with information on our latest news, events and research projects. On average, the website receives more than 3,000 visitors per month, and 85% of these are new visitors. In 2017, our website traffic increased by 18% with 34,000 new visitors.

SOCIAL MEDIA

MSSI regularly communicates on Twitter to over 1700 followers. Analytics for 2017 include:

- > An increase in followers by 31% to 1787.
- > Total impressions increased by 152% (our tweets were seen by over 323 000 people).
- > Our posts were retweeted more than 494 times, an increase of 86% on the previous year.
- > Our posts we 'liked' more than 600 times, which is an increase of 113%.

Top Tweet earned 6,025 impressions

Read our recommendations to the Federal Government on how to develop sustainable cities [#parliamentary #inquiry](#)
sustainable.unimelb.edu.au/federal-govern... pic.twitter.com/TwWzmvmn4



Top Tweet earned 5,821 impressions

Breaking: The cost of [#homelessness](#) is more than the cost of providing housing: our new research bit.ly/2np48hf
[#affordablehousing](#)
pic.twitter.com/gurEgVaJp5





TOP STORIES

> **The Case for Investing in Last Resort Housing**, was a MSSI report that resulted from our research on the increasing incidence of homelessness in Melbourne, a project carried out in conjunction with SGS Economics and Planning. The report revealed that it's cheaper to place the state's homeless population in housing than have them living on the streets. Media mentions of this report featured on ABC News 24, ABC Radio, The Guardian, SBS News online, Herald Sun, Perth Now, The Courier Mail, The Age and was broadcast on many other regional news stations.



Ellen Witte, author of our report on The Case for Investing in Last Resort Housing, was interviewed on ABC News 24 which was broadcast nationally.

> **The Ecocity World Summit** attracted high media interest during the three days with a strong focus on the key challenges affecting cities around the world. Topics concerning urban greening, food waste, the urban heat island effect and the sustainable development goals particularly sparked media interest, appearing in press, radio and TV. The Conversation also ran a series of articles related to the Summit which achieved a great engagement rate.

MSSI PEOPLE IN THE NEWS

- Don Henry and Ben Parr wrote for **Pursuit** about what Trump's decision may mean for global action on climate change and the future of the Paris Agreement.
- Brendan Gleeson wrote articles on how Melbourne can lead the world on urban change in the **Herald Sun**.
- Brendan Gleeson was interviewed by **The Age** about what Melbourne could look like in 2040.
- Janet Stanley was interviewed about her research on preventing bushfire arson on **ABC Radio National**.
- Janet Stanley was interviewed by the **Herald Sun** about her research into how low-cost housing and urban sprawl are increasing the risk of bushfire arson.
- Janet Stanley was interviewed by **ABC Radio** on a new system that allows police to trace suspected bushfire arsonists.
- Janet Stanley authored an article in **The Conversation** on the performance shortfall of competitive tendering for public transport.
- Janet Stanley was interviewed on **ABC Radio** about her research on arson and the increased bushfire risk from climate change and sociocultural trends.
- Tim Flannery has investigated seaweed in a recent episode of the **ABC's Catalyst** program.
- Cathy Alexander was interviewed on the **BBC World Service** about our recent research on homelessness.
- Samuel Alexander wrote for **The Conversation** about the role art can play in moving towards a degrowth economy.
- Samuel Alexander was interviewed on **Triple R radio** about Post-Truth Environmentalism and whether the environment can survive the human brain's emotional biases.
- Following on from his recent Briefing Paper, Ben Parr has written an Op Ed titled 'Canada should tackle a tougher climate target' which was published in **The Hilltimes Canada**.



Financial Statement

Internal Income

Core funding from Deputy Vice-Chancellor (Research)

DVC(R) Annual MRI Core Funding	\$1,042,000
DVC(R) Annual MRI Space Charge Subsidy	\$30,000
DVC(R) Annual MRI Supplementary Funding Administrative (project) support funds	\$50,000
Other Income, Internal	\$9,643

Total Internal Income \$1,131,643

Expenditure

Core staff salaries	\$510,465
Research project salaries	\$341,908
Seed funding and partnership development	\$136,801
Higher degree by research enabling	\$72,000
Communication and dissemination	\$12,944
Research enabling - Other	\$23,669
Host Faculty space charge	\$30,000

Total Expenditure \$1,127,787

Balance \$3,856

Other Income (External) 2017	\$378,295
------------------------------	-----------

Total External Income \$378,295



THE UNIVERSITY OF
MELBOURNE

Melbourne Sustainable Society Institute

sustainable.unimelb.edu.au

Director

Prof Brendan Gleeson

brendan.gleeson@unimelb.edu.au

General enquiries

03 9035 8235

mssi-enquiries@unimelb.edu.au

Twitter

[@MSSIMelb](https://twitter.com/MSSIMelb)

Address

Level 3, Melbourne School of Design (Blg 133)

Masson Rd

The University of Melbourne

Parkville 3010

Australia